

## Level 2 Award in Forest School Programme Support FSTC Modular Course

### Details for Hampshire Sustainability Centre course, starting September 2015

Please ensure you have read our '**Level 2 Course Information Guide**' (available on our website) in conjunction with this flier. The information Guide contains full details about the content, commitment and assessment methods of our level 2 Forest School training course.

#### **Course Dates & Locations:**

Course Component	Date	Number of Days	Location
Immersion	Monday 28 <sup>th</sup> September 2015	1	Sustainability Centre
Module 1	Tuesday 29 <sup>th</sup> & Wednesday 30 <sup>th</sup> September 2015	2	Sustainability Centre
Module 2	Monday 2 <sup>nd</sup> & Tuesday 3 <sup>rd</sup> November 2015	2	Sustainability Centre
Final Hand-in	31 <sup>st</sup> January 2016	n/a	n/a

**Timings:** 9am to 5pm each day

#### **Venue – Sustainability Centre**

We are pleased to have the support of the Sustainability Centre, who are hosting this training course. The Centre has 55 acres of woodland and chalk downland and is located in the heart of the South Downs National Park. The centre host a huge variety of events, courses and activities all centred on promoting sustainability. We will be using one of their training rooms as well as an area of woodland throughout the training. You can find out more about the venue on their website here: [www.sustainability-centre.org/](http://www.sustainability-centre.org/)

#### **Facilities**

The sustainability centre can provide on site accommodation in their eco lodge or camping facilities. **Please contact the accommodation office to find availability, prices and to book on 01730 823549 or email [accommodation@sustainability-centre.org](mailto:accommodation@sustainability-centre.org).** There also is a café on site providing yummy vegetarian food

#### **Prices**

FSTC prices are fully inclusive of all course costs, including; qualification registration & certification, assessment marking & moderation, administration, course support resources & access to equipment, student website access, and tutorial support. There are no 'hidden extras' and we do not charge our students for late submission of work (unless the submission date has gone beyond what is required by the moderators).

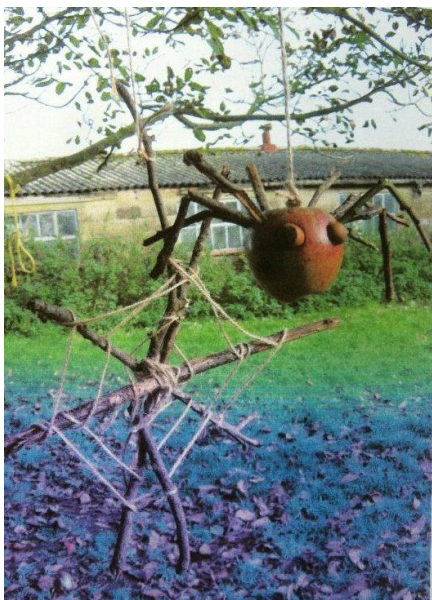
	Number of Training Days attended	Cost of course
Level 2 Full Course	5	£700



### **Value Added Features of our training course**

We care about the quality of our training and the Forest School practice which ultimately results from it. There is a wide range of Forest School training available in the UK and we want to ensure that our course is right for the students that choose to undertake their training with us. Some of the additional benefits that our training offers are:

- **Modular Format** – making learning more manageable, and giving you the option to ‘top up’ your training to level 3 in the future should you wish to.
- **Nationally recognised Qualification** – we use the most up to date Forest School qualification units. These are the national standard and on the QCF.
- **Outdoor living experiences** – through the initial immersion day
- **Online Services** – Student password protected web pages & resources,
- **Ongoing Support** – ‘Tutor on call’ days for tutorial support
- **Free 1 year student membership** to the Forest School Association



### **Supporting a Forest School Programme**

To complete the level 2 qualification students are required to support a minimum of 3 consecutive sessions within a Forest School programme being run by a level 3 Leader. It is usual that students will arrange this themselves, however if participants do not yet have contact with a Forest School, our tutors may be able to signpost students to existing Forest Schools if needed.

### **How to Book**

Please send an email enquiry including a contact telephone number to [sam@sustainability-centre.org](mailto:sam@sustainability-centre.org). Sam will then contact you by telephone to discuss your booking. The administration of this course is being managed by the sustainability centre. You will be advised on booking systems during the phone conversation.